

2014 Volume 1

**TFM**®

Civil Engineers  
Traffic Engineers  
Structural Engineers  
Land Surveyors  
Landscape Architects  
Scientists

**CONTACT:**

- **Robert Duval, PE, LEED AP**  
President / Chief Engineer
- **Dylan Cruess**  
Chief Operating Officer
- **Paul Sbacchi, PE**  
Chief Structural Engineer
- **Anne Cruess, ASLA**  
Chief Landscape Architect
- **James O'Neil, LLS**  
Chief of Survey
- **Jeffrey Kevan**  
Civil Project Supervisor
- **Robert Cruess, PE**  
Director

A MESSAGE FROM OUR PRESIDENT

*Off to a great start . . .*

**2014** marks the second year of the transition of TFMoran's ownership. Four long-time employees make up the new ownership team: **Robert Duval**, President; **Dylan Cruess**, COO; **Jeff Kevan**, Sr. Vice President; and **Paul Sbacchi**, Sr. Vice President. The new team continues TFMoran's strong tradition of leadership, innovation, and high quality service.

For 21 years **Robert and Anne Cruess** were the principal owners, acquiring the company in 1991. Under their leadership TFMoran received many project awards from leading independent organizations. Robert now serves as the chairman of the board of directors and Anne continues as Chief Landscape Architect heading up the TFM Design department.

We are now celebrating over 46 years of continuous business to private and public sector clients, the only survey/engineering firm based in New Hampshire that can

make this claim. We are a true "one stop shop" for land development services, offering in-house structural and traffic engineering, construction support, environmental science, and landscape architecture.



ROBERT DUVAL



DYLAN CRUESS



JEFFREY KEVAN



PAUL SBACCHI

In 2014, TFMoran again received the **BOB Award** as Best Engineering Firm in New Hampshire. 3,900 ballots were cast in a statewide New Hampshire Business Review readers' survey honoring the best of business in New Hampshire. We are especially proud to receive this award and credit our dedicated staff for the excellent service they give to our community every day.

Thanks to our clients and NHBR readers for your votes. We look forward to another great year!

*Robert E. Duval*  
Robert E. Duval, PE-President



## TFM Launches New Web Site in 2014!

With the help of web developer **Keza Media** and **brainium**, both of Manchester, NH, you can now view our work by searching by industry or service. The site design is simple and clean, making it easy to navigate by way of a photo gallery-like approach. You can "meet our team" and learn more about us and our services. Don't forget to check out our Resource Center page and recent posts. We will continue to add features and projects to the site, as we have many more in our portfolio to feature. Please take a moment to visit:

[www.tfmoran.com](http://www.tfmoran.com)





## PROJECTS in Progress

■ **Prologis Distribution Center, Londonderry, NH:** TFM is providing survey, site/civil, traffic and structural engineering, and landscape architecture for a proposed 614,000sf facility for UPS on Pettingill Road. Dacon Corporation is the design-builder and Continental Paving is the site contractor.

■ **AutoFair Honda, Dover, NH:** TFM is providing survey, site/civil and structural engineering, and landscape architecture services to Warrenstreet Architects for a proposed new 46,500sf auto dealership on Dover Point Road and Stark Avenue.

■ **Phillips Exeter Academy, Exeter, NH:** TFM is providing structural engineering services to Cutler Associates for renovations to Webster Hall. The dormitory is a 4-story, brick building built in 1912.

■ **Jiten Hotel Management, Bedford, NH:** TFM is providing conceptual site plans for a proposed mixed-use development on the old Wayfarer Inn site.

■ **Saint Anselm College, New Dormitory, Manchester, NH:** Currently under construction, TFM provided Lavallee Brensingier Architects civil engineering services for a new 47,000sf, 3-story, 150-bed, brick dorm built by Eckman Construction.

■ **Riley Enterprises, Medical Office Building, Bedford, NH:** Currently under construction, TFM provided civil/site engineering services for a 1-story, 5,000sf Convenient MD medical office building on the corner of Route 101 and Nashua Road.

■ **Water Distribution System Extension, Milford, NH:** TFM is providing engineering design and bid/construction support services to the Town for approximately 2,700 linear feet of water main on Elm Street from 101 and 101A intersection westerly to the intersection of Rte 101 and Wilton Road.

■ **NH Correctional Facility for Women, Concord, NH:** TFM is providing survey and civil engineering services to SMRT, Inc. for a new 224-bed correctional facility to be built behind the men's existing facility off North State Street.

■ **Unitil Kingston Substation, Kingston, NH:** TFM is providing construction support services, including SWPPP plans and environmental monitoring for electrical infrastructure project.

■ **Weaver Brothers Construction, I-93 Exit 3, Windham, NH:** Monitoring SWPPP and Erosion and Sediment Controls and Water Quality Monitoring for Construction Stormwater services.

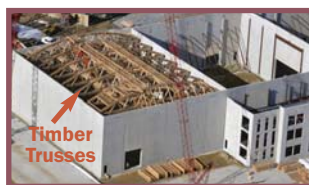
■ **Contoocook Fire Station, Hopkinton, NH:** Civil/site and structural design for additions and renovations to the existing fire station for Port One Architects.

■ **Divine Mercy Parish, Peterborough, NH:** Structural design for a new 12,990sf Catholic church for Warrenstreet Architects. The sanctuary will accommodate over 300 parishioners.

## TFM in the news . . .

### New England Studios

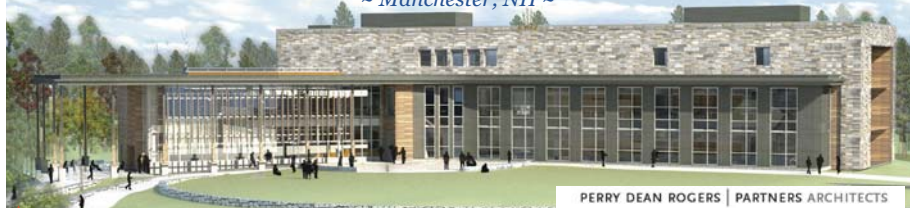
~ Devens, MA ~



TFM's Structural Engineers provided structural services for the new state-of-the-art television and film studio on a 15-acre site of the former Fort Devens U.S. military base. The 126,000sf studio, designed by Bastien & Associates of Tustin, California includes four 18,000sf "Hollywood-style" sound stages, production support offices, mill, storage building, and sound stage support areas. The entire project is constructed with concrete tilt wall panels and includes 120' clear span timber trusses at the sound stages. The construction of this \$30M fast-track project was completed by Hutter/Seppala Joint Venture in just under 15 months.

### Completion nears on \$18 million Southern NH University Library and Learning Commons

~ Manchester, NH ~



#### New Library and Learning Commons

TFM provided site design, permitting and land surveying services for a new 3-story 50,000sf library and learning center located on North River Road on campus. The project team includes Perry Dean Rogers Partners Architects, Harvey Construction and Leighton A. White as site contractor.



#### SNHU Expands Student Housing



■ **Tuckerman Hall** TFM provided site design, permitting and land surveying for a new 20,000sf, 4-story, 308-bed dormitory located on East Side Drive. The project team included JSA Architects and North Branch Construction.





## Remembering John Myhaver

TFM's dear friend and co-worker of 35 years, John Myhaver passed away last year after battling cancer. John will be remembered as a true professional in his field of land surveying and for his love of life. He started as field operations manager and became a principal and chief of survey. John also served as vice chair on the state of NH Board of Land Surveyors.



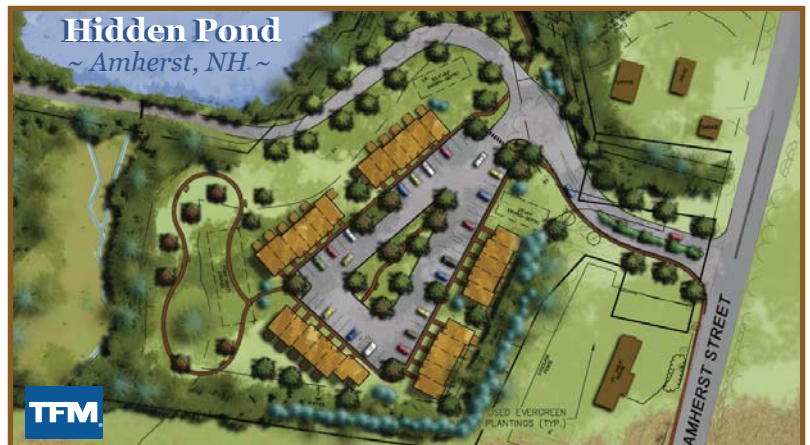
John always found a way to mix fun with work...he was the captain of the ski team (seen above proudly holding the 2009 trophy), he played on the TFM softball team and entertained us at the TFM summer cookout events playing and singing in his band UBG Orchestra. John is remembered and missed by all of us at TFM Moran who had the privilege of knowing and working with him.

TFM provided civil/site design, superstructure engineering, traffic engineering, permitting, stormwater monitoring, construction inspection, landscape architecture and survey services for this 243,500sf warehouse building. Exel, Inc. was contracted by the state to provide storage and distribution services to the State of New Hampshire's Liquor Commission. The single story facility has 21 truck docks with a possibility of an additional 12 docks for future use. PROCON, Inc. was the architect and construction manager for the project. Canam provided the structural steel and insulated foam panels. The project was completed in under 12 months.

## Innovative Workforce Housing Development ...



Project Team at Ribbon Cutting Event



TFM worked with NeighborWorks® Southern New Hampshire and BMA Architectural Group of Amherst, NH to create this innovative workforce housing development. "Hidden Pond" consists of 28 townhouse rental units within the historic district of Amherst. Each of the five buildings were designed to reflect the Federalist style of architecture found in the area of the Town Common. The layout of the buildings was themed around a central park, technically a rain garden, that provides stormwater treatment for the surrounding parking area. Each unit has a private backyard patio and access to walking paths and passive recreation areas, some of which lead to a "hidden pond". TFM was responsible for the civil engineering, landscape architecture and permitting for this project.



## TFMoran Hosts 2014 NH CIBOR Annual BBQ



David Choate, III (left) accepting award from Mark Dickey



Thanks to TFM Staff who helped make this event a success!

TFMoran hosted the **New Hampshire Commercial Investment Board of REALTORS®** annual meeting and barbecue on Thursday, June 19<sup>th</sup> at the Bedford office. For the second straight year, the weather cooperated with lots of sun and a slight breeze.

Over one hundred CIBOR members, along with TFM staff enjoyed the cookout, which featured steak tips by **The Wine'ing Butcher** and ice cream by **The Inside Scoop**. TFM has been hosting the annual NH CIBOR meeting and cookout for more than 15 years. We are proud to partner with NH CIBOR each year for such a great event.

**David Choate, III** of **Colliers International** was presented with the REALTOR-of-the-Year award by NH CIBOR president **Mark Dickey**. The Affiliate-of-the Year was **J. Chris Nadeau**. Additional awards were also presented.

## Senator Scott Brown Visits TFMoran's Office



As part of TFMoran's ongoing effort to be involved with our community, we hosted a visit from former Senator Scott Brown at our office. Senator Brown spoke and answered audience questions for over forty-five minutes, including giving everyone a opportunity to voice what issues were most important to them. Senator Brown is a former Senator from Massachusetts and is now running for the United States Senate in New Hampshire.

## UMASS Lowell Riverview Suites

~ Lowell, MA



rendering courtesy Neshamkin French Architects

TFM Structural Engineers worked with **Performance Building Company** of Lowell, MA and **Neshamkin French Architects** of Charlestown, MA to design this new 6-story, 150,000sf private student housing facility. The dorm houses 510 students and is located directly adjacent to the UMASS Lowell South Campus. The structural system was designed with the Infinity Structural System to allow minimal floor to floor heights. The first floor framing and bearing walls above are supported on structural steel framing at the 2nd floor to allow open areas for first floor parking. The dorm is connected to a University parking lot by a 104 foot, 32-ton pedestrian bridge, which crosses over railroad tracks. **Lowell Iron and Steel** fabricated the bridge in their Lowell manufacturing plant using American-made materials.

## Cornerstone at Milford ~ Assisted Living

~ Milford, MA



rendering courtesy Udelsman Associates

TFM provided structural engineering services to **Udelsman Associates**, of Hollis, NH for the construction of this new wood framed structure. The building includes a single-story 29,300sf Alzheimer's wing and a 2-story 21,600sf assisted living wing. Cornerstone offers seniors assisted living and Alzheimer's support services affiliated with the Boston University School of Medicine Alzheimer's Disease Center.

## Gatehouse 75

~ Cambridge, MA



TFM Structural Engineers provided structural design to **Neshamkin French Architects** for a five-story, multi-family residential apartment building. The building includes five above-grade residential levels and one below-grade parking level with a total building size of approximately 154,00sf. The building was constructed of concrete and steel framed lower levels and wood framed upper levels. TFM worked closely with the architect and **Metric Construction Corp.** on this design-build project.



## Hampton Beach Fire Station #1

~ HAMPTON, NEW HAMPSHIRE ~



**TFM Engineers** provided site design, permitting, and construction administration for a new two-story 11,000sf fire station designed by **Cowan Goudreau Architects** of Concord, NH. The four bay station is located on the corner of Brown Avenue and Ashworth Avenue and serves the Hampton Beach area. Fire Station #2 on Winnicunnett Road in Hampton was also renovated and expanded, TFM provided civil and structural engineering for the architect. **Eckman Construction** was the construction manager for both stations.

TFM provided topographic survey, civil/site engineering, permitting, and structural design services to **Port One Architects** of Portsmouth, NH for this pre-engineered metal building which houses Hopkinton's Public Work Department. The new 13,750sf facility has seven large bays and includes offices, locker rooms, a mezzanine for additional storage, and a pellet-fired boiler.

### Town of Hopkinton DPW Garage

Hopkinton, NH



## TFM Assisting in Road Reconstruction Program

~ Amherst, NH

TFM Moran engineers are working with the Town of Amherst in assisting the Department of Public Works Director in road reconstruction engineering and on-site inspection for a three year Reconstruction Program. Now in the second year, over a dozen roads and key intersections have been repaired, including culvert replacements, underdrain improvements, full box excavation, rock and ledge removal, shoulder work and pedestrian access. Extreme care was taken during construction in the heart of Amherst's historic district and Town Center to avoid damage to the numerous historic structures often within a few feet of roadway. **Continental Paving** of Londonderry, NH is the road construction contractor.



## COMMUNITY Events

### TFM Design helps with master planning for The Organic Gardens at Joppa Hill

The Town of Bedford is expanding Joppa Hill Farm with a community project called "The Organic Gardens". The garden will promote education through agriculture and supporting organic principles, TFM's Chief Landscape Architect, **Anne Cruess** worked with **Michelle Moore** from the Garden committee to design



the garden layout and create a graphic presentation for fundraising. The plan includes seasonal rotation crop gardens, a community garden featuring sixty-five 10'x20' plots, a teach & learn children's garden, a blueberry field, and various fruit trees. For more information visit: [www.theeducationalfarm.org](http://www.theeducationalfarm.org)



### The Park Theatre: A Community Project

The Park Theatre in Jaffrey, NH has broken ground and is awaiting additional funding for construction. TFM's civil and structural engineers have been part of the team, along with **Hutter Construction** and **BJA Architects**. The Theatre will be a regional center for the arts and entertainment, and a meeting house for the community. For more information visit: [www.theparktheatre.org](http://www.theparktheatre.org)

### TFM Structural Engineers donates design services for Capital Region Habitat for Humanity in Concord, NH

Sheerr McCrystal Palson Architecture, Inc. was the project coordinator for a relocated two-story modular colonial home for Southeast New Hampshire Habitat for Humanity®. TFM donated foundation structural design services and is proud to be a part of the team which included **Sovereign Consulting** and **Solid Earth Technologies**.





Photo by Joanne Smith

#### Robert & Anne Cruess

are the first husband and wife to serve simultaneously on the State of New Hampshire Joint Board of Licensure and Certification. The Joint Board consists of multiple boards whose primary focus is to safeguard the public health, safety, welfare, environment and the public trust by regulating the professions.

**Robert Cruess, PE** was named Chairperson of the New Hampshire Board of Professional Engineers. He has served on the PE Board for ten years. Robert also serves on the Associated General Contractors of New Hampshire Board.

**Anne Cruess, ASLA** was reappointed as Chairperson of the New Hampshire Board of Landscape Architects. She has held this position since the board was formed in 2006, after Governor Lynch signed the licensure bill into law. Anne was one of the key members of the Granite State Landscape Architects who was involved with the preparation, negotiation, lobbying and fundraising for the licensure bill.



L-R: Meyer, Ayotte, Cruess

As New Hampshire Chapter's ASLA Trustee Anne, along with GSLA president **Susanne Smith Meyer**, represented the state this spring for the second consecutive year as advocates at the ASLA national headquarters in Washington, DC. They met with representatives of the New Hampshire Senate and Congress to support legislation that provides effective regulation of the practice of landscape architecture. For more information go to [www.asla.org](http://www.asla.org)



**Christopher Rice**  
Senior Project Manager



**Thomas Lamb, PE**  
Senior Structural Engineer



**Joaquín Denoya, PE**  
Senior Structural Engineer

#### Three Engineers Promoted to Senior Positions

**Christopher Rice** has been promoted to Senior Project Manager. Chris has over fifteen years experience in civil engineering and is responsible for the management and engineering design of private, public and municipal land development projects.

**Thomas Lamb, PE** has been promoted to Senior Structural Engineer. Tom has over ten years experience in structural design, analysis, and construction administration of residential, public and commercial buildings throughout New England.

**Joaquín Denoya, PE** has been promoted to Senior Structural Engineer. With more than nine years experience, Joaquín specializes in structural design, analysis, and construction administration of residential and commercial buildings throughout New England, New York and New Jersey.



The Bedford Village Inn is planning a new 55-room hotel adjacent to the existing Inn on Olde Bedford Way. TFMoran engineers are providing civil/site design, permitting and structural design for the project. TFM also provided landscape architecture and land surveying. The project architect is **John S. Jordan Design, PLLC** and construction will be provided by **Mark Carrier Construction, Inc.**



Construction is now underway for Phase 2 of the Medicus Healthcare Solutions, Inc. office complex in Windham, NH. TFM provided structural design and construction administration to **Berard-Martel Architects** for both phases. The three-story, 29,000sf new building connects at the second floor to Building 1. The construction is steel and concrete framed; a steel roof and floor framing is supported on energy efficient insulated concrete formed walls at the exterior.



#### PSNH Eastport Switching Station

~ Rochester, NH

TFM Moran Engineers, Surveyors and Scientists contracted with Public Service Company of New Hampshire (PSNH) for the civil design, permitting and construction related services for the Eastport Switchyard, a vital electric utility infrastructure upgrade to meet the increased power demand of the public and provide continued reliable service to the area. Due to the complexities of the siting of the project, permitting with the State for an Alteration of Terrain permit and Wetlands dredge and fill permit were required as well as permitting on the municipal level for site plan approval and variances to accommodate the required electrical configuration. Through the construction process TFM Moran has supported PSNH by providing inspection services to evaluate effectiveness of stormwater best management practices and confirm site plan and permit compliance. Construction is ongoing.





## St. Mary's Bank - a new look!



TFM worked with **Lavallee Brensinger Architects** to provide site/civil design, permitting, survey, traffic engineering and landscape architecture for the new headquarters for St. Mary's Bank, the nation's first credit union. St. Mary's Bank has been located in this part of Manchester for over 100 years. The new headquarters building incorporates historic and modern elements. The site is located in a busy, active shopping center in a prominent location in west Manchester. **Harvey Construction** was the general contractor.

## TFMoran Designs Site for a new Emotional and Behavioral Wellness Center at Parkland Medical Center



rendering courtesy JSA, Inc.

Construction is now underway for a new 7,500sf, two story addition and a 2,600sf renovation for a new Emotional & Behavioral Wellness Unit at Parkland Medical Center in Derry, NH. TFMoran provided survey, site design and permitting for architects **JSA, Inc.** The new \$3million inpatient behavioral health care facility is being built by general contractor **Hutter Construction**. Parkland Medical Center is proud to offer this new program which will provide patients with comprehensive, individualized emotional wellness care when they need it the most, without leaving the community.



**TFM Helping in the Philippines** ~ Employees of TFMoran, received a Contribution Plaque from **Maria White**, CEO of **American Red Cross New Hampshire**, for donating over \$2,000 to Typhoon Haiyan relief efforts. The American Red Cross has committed \$16 million to the response for Typhoon Haiyan to purchase and distribute relief items such as food, blankets, hygiene kits, mosquito nets and to provide cash grants. To learn more visit [www.redcross.org/nh](http://www.redcross.org/nh).

## COMMUNITY *Events*



Above L-R: Nick Golon, Tucker McCarthy, Dylan Cruess

### TFM Employees Judge High School NH Science & Engineering Expo at NHTI

Nick Golon, Tucker McCarthy and Dylan Cruess participated as judges in the 2014 NH Science and Engineering Expo in Concord. The Expo featured science, math, and engineering projects created by high school students from around the State.



Above L-R: Joe Sperry, Walt Bilynsky, Nick Golon, Alan Roe

### TFMoran Sponsors NH-ASCE Scholarship Golf Tournament

On Friday, June 6th TFMoran was a Gold sponsor for the New Hampshire Section of the American Society of Civil Engineers (NH-ASCE) scholarship golf outing at the Beaver Meadow Golf Club in Concord, NH. All proceeds above event costs go to the NH-ASCE Scholarship Fund to assist NH high school seniors and UNH students enrolled in ABET accredited Civil Engineering programs. Senior Project Manager, **Nick Golon, PE**, also a member of the NH-ASCE Board of Directors, represented TFMoran on the fairways and greens accompanied by **Walter Bilynsky**, **Joe Sperry** and **Alan Roe**. The weather was beautiful, the scores were low, and a great time was had by all!

### Manchester Construction Career Fair

TFMoran was the only engineering firm to participate in the Construction Career Fair organized by Manchester based HR Firm, Cultural Chemistry, LLC. The venue provided a great opportunity to meet with potential job seekers and provide information to local contractors about TFM's extensive experience in residential survey and structural engineering. We look forward to next year's Fair!

# FedEx Ground Boston Metro Distribution Center

~ Natick, MA



TFM Structural Engineers provided structural engineering services for **Jay Steel** of Amherst, NH and **Dacon Corporation** of Natick, MA for this 178,000sf FedEx Ground facility on Superior Drive in Natick. The building has a conventional steel structure with pre-cast concrete pressed panels, metal deck, rigid insulation and EPDM roof membrane. In addition to the 10 drive-in doors and 42 dock positions the center includes 7,000sf of office space.

## TFM Staff News



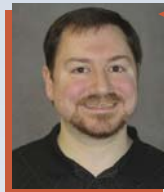
▶ **James O'Neil, LLS** was recently hired to serve as **Chief of Survey**. Jim is a Licensed Land Surveyor in NH with over 20 years experience. He is responsible to oversee all land surveying projects from proposal to completion, including field operation, technical computations, research and boundary determinations, and project management. Jim is a member of the New Hampshire Land Surveyors Association, National Society of Professional Land Surveyors.



▶ **Jason Hill, EIT** joined the company as a **Civil Engineering Project Manager**. His experience includes site planning, roadway design and construction support services. Jason has a Bachelor of Science degree in Environmental Engineering from Syracuse University.



▶ **Robert Vida, EIT** recently joined TFM serving as a **Structural Engineer**. Rob has a Masters of Engineering degree in Structural Engineering, a Bachelor of Science degree in Civil Engineering and a minor in Economics from Rensselaer Polytechnic Institute. Rob designs residential and commercial buildings and is proficient in Revit®.



▶ **Thomas Burns, PE** has joined the staff as a **Civil Engineering Project Manager** with 14 years of experience. Tom has Bachelor of Science degree in Civil Engineering from UNH and is licensed in NH and ME.



▶ **Stephen Bibeau, LLS** was recently hired as a **Survey Technician** with over 28 years of experience in the field. Stephen's responsibilities include boundary, topography, ALTA and As-built surveys.



▶ **Nicholas Bullard** was recently hired part-time to assist with environmental monitoring. Nick is currently a Junior at Southern New Hampshire University pursuing a Bachelor of Science degree in accounting.



▶ **Celia Belletete** is a summer intern assisting the civil, structural and traffic engineering departments. Celia will be a Junior at the University of New Hampshire pursuing a Bachelor of Science degree in Civil Engineering.



Civil Engineers  
Traffic Engineers  
Land Surveyors  
Land Planners  
Scientists



TFMORAN, INC. 48 Constitution Drive, Bedford, New Hampshire 03110 P: (603) 472-4488 F: (603) 472-9747 [www.tfmoran.com](http://www.tfmoran.com)