



MCCI Mark Carrier Construction, Inc.

Mark Carrier Construction, Inc. (MCCI) is a full-service construction firm specializing in commercial, industrial, healthcare and government projects. Our experience ranges from new construction to renovations, additions to service work. We pride ourselves on the ability to aid clients with needs that range from pre-construction planning to occupancy.

www.mcci-nh.com
603-627-9506



Mark Carrier Construction, TFMoran bring vision of boutique hotel to life

Every construction project presents its own challenges, but as work was about to begin on The Grand at the Bedford Village Inn – the new boutique hotel adjacent to the iconic Bedford restaurant and inn – the project’s general contractor faced something completely unexpected.

Jack Carnevale, the owner of the Bedford Village Inn and the Grand at the Bedford Village Inn, had tasked Mark Carrier Construction to begin the project. In February of 2015, Mark Carrier unexpectedly passed away.

“It was his business – he was the one in negotiation with Jack Carnevale,” Mark’s brother, Don Carrier, says. “I had my own

business building custom homes for 25 years, but I ended up stepping in to run the company. The Grand was not contracted by that point in time, but everything was ready and everything was negotiated. Jack agreed to stay with us, but it was really my brother who pulled the design/build together.”

Construction began in the spring at the site, which sits directly behind the original inn. And while the site was bare, with no structures, Mark Carrier Construction, Inc. (MCCI) had to prepare by dealing with a substantial amount of ledge.

“We spent eight weeks blasting 33,000 yards of ledge,” Carrier says. “And once we completed the blasting, it was a chal-



lenge to retain the slope of the property line along with fitting in the built-in pool, patio and landscaping.”

Adding those amenities were challenging, he says, but in the end worth it. A fully-equipped fitness facility steps out onto a patio next to the saltwater pool, which is heated year-round, and the hot tub. It’s all surrounded by sweeping natural, lush gardens.

“Jack Carnevale was very hands-on,” Carrier says. “One of the first times that I saw him at the Bedford Village Inn, he was on his hands and knees gardening. As we were finishing the Grand, Jack laid out all the landscaping for the back yard gardens and patio.”

That hands-on approach made planning the three-story, 50-room, Dutch Colonial style boutique hotel surprisingly problem-free.

“Jack was very animated when I first met

him,” says Architect John Jordan of John S. Jordan Design, of Canterbury. “He has a great way of describing his vision. I took it all in – I try my best to listen to what the customer is trying to achieve and respond accordingly. It was a matter of experience, and we had the good fortune of hitting it off well. Personalities are very important in building business relationships.”

Jordan says he took Carnevale’s vision back to his office and began researching single-style projects and historic, grand hotels. He distilled those examples to create plans for a building that would be in that style, while making the most of modern materials and maintenance-free exteriors.

“It’s a classic example of a grand hotel,” Jordan says. “You can see the historic precedence we were hoping to allude to. We weren’t going to try to re-invent the wheel. We wanted to honor history and

American MASONRY Construction
867-3272
www.americanmasonrynh.com
Brick • Block • Stone • Thin Veneer

Granite State Plumbing & Heating, LLC
A division of **SYSTEMS USA**
10 N. Riverdale Road Weare, NH 03281
Toll Free (866) 540-1542
Phone (603) 529-3322
Service (603) 529-3331
www.gspinc.com

Mechanical Contractors

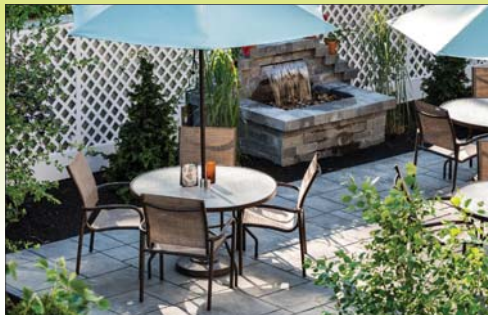
- Commercial
- Industrial
- Institutional
- Multi-Family
- Design/Build



Service Department

- Refrigeration
- Heating/AC
- Medical Gas
- Plumbing
- 24-Hour Service
- PM Contracts

Proudly Serving the New Hampshire Construction Community Since 1983



THE GRAND
AT BEDFORD VILLAGE INN

IT WAS WELL WORTH THE WAIT!

AFTER NEARLY 14 YEARS IN THE MAKING, WE ARE PROUD THAT OUR VISION HAS MATERIALIZED INTO ONE OF THE FINEST BOUTIQUE HOTELS IN NEW ENGLAND. WE’D LIKE TO THANK ALL THE SKILLED TRADESPEOPLE THAT WORKED TOGETHER TO CREATE THE GRAND AT THE BEDFORD VILLAGE INN AND ALL OUR GUESTS THAT HAVE EXPERIENCED THE GRAND FOR AN OVERNIGHT STAY, BUSINESS MEETING OR A VISIT TO THE LOBBY BAR.

WE’RE OFF TO A WONDERFUL START!

LIFESTYLE®
Preferred
HOTELS & RESORTS

TWO OLDE BEDFORD WAY, BEDFORD, NEW HAMPSHIRE
603-472-2001 WWW.BEDFORDVILLAGEINN.COM 800.852.1166



MILFORD LUMBER COMPANY
BUILDINGPARTNERS EVERYDAY.COM

Tims Joist
A Weyerhaeuser Business

The Muir Showrooms

Milford, NH 603-673-3331
Bedford, NH 603-668-3363
Kitchen • Bath • Windows • Doors • Millwork



Dynasty
JKO

JW JELD-WEN
WINDOWS & DOORS



FROM PAGE 25

what Jack had built on-site already with the Bedford Village Inn, and expand on his success and philosophies in making that a successful business venture."

The 52,000-square-foot hotel boasts a mix of classic New England and modern amenities. LED lighting and the complimentary high-speed, fiber optic Wi-Fi never seems out of place next to the fieldstone fireplace in the comfortable lobby bar. A business center with high-tech appointments sits just down the hall from a classic library room, stuffed with books and couches.

Carrier, MCCJ Project Manager Mark Jo-bin, Carnevale and his wife, Andrea, met

weekly before the first shovel was turned through completion. When it came time to begin designing and decorating the interior, Jordan worked closely with Carnevale to achieve a very specific look the owner had in mind.

"Early on we were cutting out cardboard furniture and beds and moving things around the suites – while we were still doing the rough walls and before we did any wiring or lighting," Carrier says. "He's a very visual person. He likes to see the placement of things. He purchased his own artwork and furnishings which he hung himself."

Project Engineers TFMoran, of Bedford, completed all the civil and structural en-



gineering, land surveying and landscape architecture – another element that Carnevale worked closely on.

"Jack is hands-on with everything," TFMoran Chief Operating Officer Dylan Cruess says. "And it went very well because he is hands-on. He's part of every decision, so there are no surprises."

Cruess says dealing with the large amount of ledge may have been challenging, but a tiered parking solution mitigated those challenges. With no wetland issues or unusual elements, Cruess says the project went largely as anticipated.

"The architect, John Jordan, did a beautiful building," Cruess says, citing window seats on the fourth level as be-

ing a notable element in the structure. "It was complex to have those cantilevered over the exterior wall."

The hotel opened officially in June, with a number of top-notch appointments, including king-size four poster beds custom made by Noir; custom upholstered furnishings by Company C; Carrera Marble bathrooms with soaking tubs; charging and connectivity for tablets, laptops and phones; and elegant fireplaces in many rooms and large suites – including the 850-square-foot Tower Suite.

"We're just proud to have been a part of it because Jack [Carnevale] does it right," Cruess says. "It's a credit to his longer-term view." **NHBR**



The Grand
at the
Bedford Village Inn

OLDE BEDFORD WAY

In-house Services TFMoran provided:

- Civil/Site Design
- Structural Engineering
- Permitting
- Construction Inspection
- Landscape Architecture
- Land Surveying

Professional Services... Exceptional Results!



Voted BEST NH
Engineering Firm
4 Years Running!!!

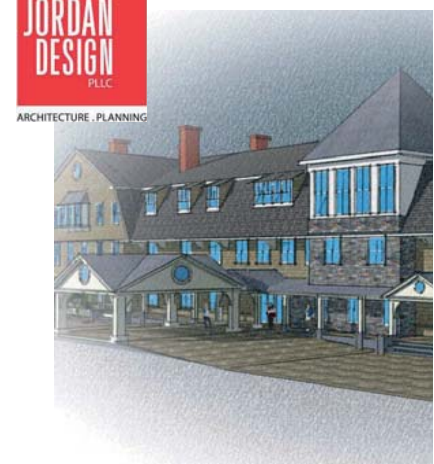


BEDFORD, NH & PORTSMOUTH, NH
(603) 472-4488 (603) 431-2222
www.tfmoran.com

Civil Engineers
Structural Engineers
Traffic Engineers
Land Surveyors
Landscape Architects
Scientists



FROM CONCEPT TO REALITY



HAPPY TO BE PART OF THE TEAM!

JOHN S. JORDAN DESIGN PLLC CANTERBURY, NH
john@jordandesign.biz



Connecting you to your customer with
trenchless technology

We have a wide variety of tooling in stock
ready to tackle any job!

A proud leader in Directional Drilling since 1998

See what everyone is talking about...

www.DBU-Construction.com

FOR MORE INFORMATION

General Contractor/Design-Build: Mark Carrier Construction, Inc.
175 Lincoln St., Suite 101, Manchester, NH
(603) 627-9506

Architect: John S. Jordan Design PLLC
19 Shoe String Road, Canterbury, NH
(603) 753-6920

Civil Engineer: TF Moran
48 Constitution Drive, Bedford, NH
(603) 472-4488



Hampshire
FIRE PROTECTION
Co., LLC

Proud to have
participated in
"The Grand" Project



www.hampshirefire.com

Sales • Design
Installation • Inspections
24 / 7 / 365 Service

Main Office

8 No Wentworth Ave
Londonderry NH 03053
603-432-8221

Service Department
55 Harvey Road
Londonderry NH 03053
603-432-8221
F 603-434-9188

Upper Valley Office
104 Elma Road
Lebanon NH 03756
603-448-5461
F 603-448-7334

Monadnock Office
227 Old Homestead Hwy
Swaranooy NH 03446
603-358-6736
F 603-358-6836

Service Credit Union is the perfect fit for your business.

Proud to be a part of
The Grand at Bedford Village Inn.

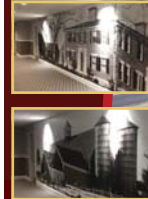
- Offering long-term, fixed-rate commercial real estate and construction loan options
- Meeting with you and getting to know your business to provide a package of services customized to your needs
- Providing the peace of mind of working with an organization with a long history of responsibility, trust and member focus

Call 603.422.8439 or
visit servicecu.org.

SERVICE
CREDIT UNION
★★★★★

FEDERALLY INSURED BY NCUA | Must be a member of Service Credit Union or eligible for membership.

Proud to have
been part of
"The Grand"
project



THE
GRAND
AT BEDFORD VILLAGE INN

Est
1974

SOUSA
Signs

sousasigns.com

Bob Perry
bperry@sousasigns.com
Cell: 603-716-0348

603-622-5067
fax 603-624-6188
225 East Industrial Park Dr.
Manchester, NH
03109

Exterior & Interior Signs
Awnings Install/Service
Vehicle Lettering Vehicle Wraps