

Medicus Healthcare Solutions

Windham, New Hampshire

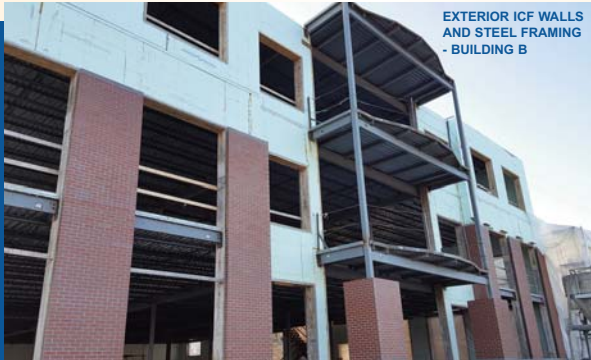
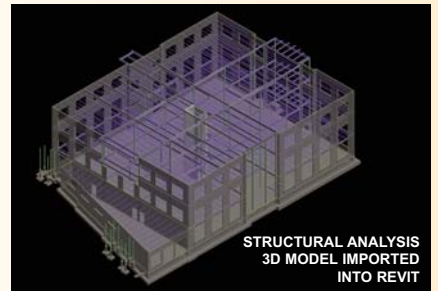


Medicus Healthcare Solutions office building complex, located in Windham, NH, is a newly constructed three building complex. The buildings contain approximately 100,000 square feet of office space and are all connected by enclosed pedestrian bridges at the second floor. Each building is framed of a hybrid system of insulated concrete formed (ICF) walls and steel open web floor joists, beams and columns. The building is founded on concrete spread footings.

ICF walls at the exterior were chosen as an economical

and energy efficient solution in lieu of the typical steel frame and metal stud curtain wall system used on most office buildings. The wall systems provided several benefits including a robust lateral load resisting system, ICF formed brick shelf, increased flexibility with façade material installation, and simplicity of connections between buildings.

A three-dimensional structural model was produced for the design of the buildings. The model was then imported into Building Information Modeling software to produce the structural drawings for the project.



TFM
Since 1968

Civil Engineers
Structural Engineers
Traffic Engineers
Land Surveyors
Landscape Architects
Scientists

CONTACT:
Robert Duval, PE, LEED AP – Chief Engineer
Paul Sbacchi, PE – Chief Structural Engineer
TFMoran Inc., 48 Constitution Drive, Bedford, NH
(603) 472-4488 www.tfmoran.com

